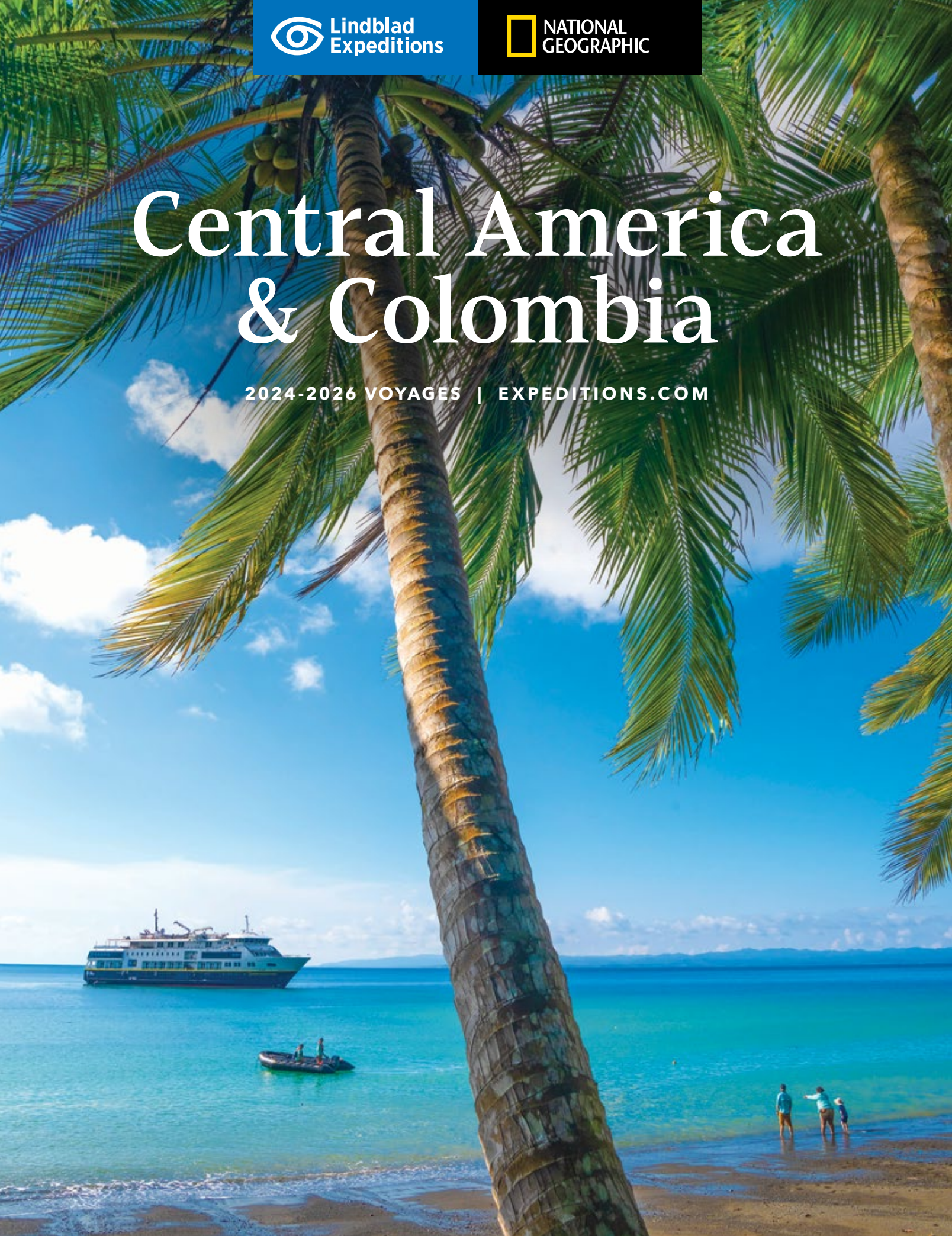


# Central America & Colombia

2024-2026 VOYAGES | [EXPEDITIONS.COM](https://www.expeditions.com)





Studded with smoldering volcanoes, carved by falling water, and draped in a thousand shades of green, Central America and Colombia harbor a pristine tropical wilderness that is delightfully close to home. The nimble *National Geographic Quest* offers a new perspective on the region, taking you deeper into its secret spaces—from serene golden beaches to mangrove forests aflutter with birdlife. Join us on idyllic isles and shores where adventure beckons from cliff to cove and passionate experts lead the way to unexpected encounters.

Cover photo: *The National Geographic Quest*, anchored in Costa Rica's Golfo Dulce. ©David Vargas  
This page: A pair of paddleboarders skirt the shores of Panama's Guna Yala archipelago. ©David Vargas



## Contents

Experience Central America and Colombia from a New Perspective with Lindblad Expeditions-National Geographic	4
Built for Awe: <i>National Geographic Quest</i>	6
The Panama Canal: A Storied Crossing Between Two Oceans	8
Uncommon Adventures in Central America and Colombia	10
What to Expect: Expedition Cruising for Families	12
Travel with Inspiring Experts	14
Expeditions	18
Extensions	22
<i>National Geographic Quest</i>	22
Special Offers & Inclusions	26
Reservation Information	27

# Experience Central America and Colombia from a New Perspective

*Lindblad Expeditions and National Geographic are united in a shared mission to take curious travelers deeper into wild and storied places that paint a richer picture of our world. Together, we craft itineraries that inspire and transform, pushing the boundaries of discovery to offer wholly unique experiences led by the foremost experts on your destination.*

## Travel with the Most Experienced Team

Every member of our team—from our naturalists and expedition leaders to our crew working behind the scenes—is committed to ensuring you have an unforgettable experience. Many are veteran guides who have worked with us for decades. They, along with the guest speakers who join us on board, give rich context to the landscapes and cultures we encounter ashore.



## Take Great Photos with the Pros



A Lindblad Expeditions-National Geographic certified photo instructor (CPI) joins each voyage to assist travelers with everything from camera settings to composition. Every guest—from smartphone camera users to advanced hobbyists—can stand side by side with top photographers, pick up tips in the field, and return home with the photos of a lifetime. With the OM System Photo Gear Locker, you can field test new lenses, camera bodies, and more.



# spective with Lindblad Expeditions-National Geographic

## Actively Explore Every Day

Our itineraries feature a range of activities designed to immerse you in your spectacular surroundings. Hike through leafy jungles in search of languid sloths and clamorous monkeys, snorkel or kayak amid swirling galaxies of tropical fish, or visit an island village to learn about centuries-old handicraft traditions. No matter the voyage, you will be able to explore your way—and at your own pace—every day.



## Unparalleled Onboard Experiences

Every aspect of your onboard experience is an opportunity to connect with and celebrate the places you explore. Beautifully appointed cabins, suites, and common areas reflect the sights, sounds, and artistic traditions of your destination, and meals feature local cuisines and sustainable ingredients sourced from nearby lands and waters. Our wellness program encourages you to tap into the rhythms of nature, whether you choose to greet the day with a stretch class on deck or unwind in the spa with a soothing massage.



---

**ALL IN:** Activities and excursions are always included in the voyage price.



# Built for Awe

## *National Geographic Quest*



The 50-cabin *National Geographic Quest* is specially designed to take you deeper into Central America and Colombia's most remote corners. This small and nimble vessel can glide into serene bays for solitary snorkeling excursions, anchor at tiny islets off the Colombian coastline, or sail along the sinuous channels of the Panama Canal Zone, where thick jungle canopies spill across the shoreline.

*National Geographic Quest* is stocked with a fleet of kayaks, stand-up paddle boards, and Zodiacs so that we can discover these wild places without being dependent on ports or piers. She is also equipped with a full suite of underwater exploration tools—including cameras and video microscopes—to give you a glimpse of the vast and vibrant world beneath the waves.



Modern and clean-lined, the ship features open decks and large windows that keep you connected with extraordinary views of tropical waters when we're not out exploring. The lounge is where fellow travelers gather to unwind and hear naturalists discuss the wonders we witness each day, and at any hour, guests can take up the captain's open invitation to visit the Bridge and watch the crew navigate the canals and bays that make these waters so extraordinary to explore.

*Above from top: A guest paddles in serene waters off Panama's Guna Yala archipelago; a Zodiac tour of Bona Island in the Gulf of Panama; guests enjoy downtime in the ship lounge; a Zodiac whisks guests back to National Geographic Quest after a day of rainforest explorations.*









# The Panama Canal

## A Storied Crossing Between Two Oceans

More than a century after its completion, the Panama Canal stands as a critical achievement in commercial and engineering history. Transiting this storied passageway aboard the *National Geographic Quest* means learning about a modern wonder from the inside out—and gaining in-depth perspectives on its economic, mechanical, and political impact from the experts who sail alongside us.

Overnighting in the Canal Zone allows guests the unique opportunity to take in eye-level views of the locks' intricate workings by day, and to witness the spectacle of the canal's dazzling illumination after dark. Just beyond the gates of this engineering marvel, we experience a dramatic change in scenery. The concrete walls of the canal stand in sharp contrast to the surrounding leafy jungles, where flora and fauna have thrived thanks to preservation efforts aimed at sustaining the health of this vital ecological corridor.

Step ashore at Barro Colorado Island to learn about the lush lowland tropical forests that have drawn biologists from across the globe to the Smithsonian Tropical Research Institute for nearly a century. On a Zodiac excursion to the tiny "monkey islands," get a wild greeting from the curious primates that approach our vessels as we navigate the shoreline. Or, walk along the elevated boardwalks of the Panama Rainforest Discovery Center trail, through a canopy that harbors a rainbow of some 400 bird species.



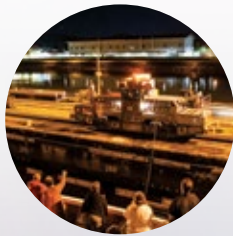
*Clockwise from top: Guests get a front row seat to the mechanics of the Panama Canal from the bow of National Geographic Quest; travelers cruise to Barro Colorado Island by Zodiac; a scarlet macaw takes flight in the Costa Rican rainforest.*

# Uncommon Adventures in Central America and Colombia

*Our voyages include unique adventures that uncover the hidden side of your destination. Discover little-known gems—like a remote archipelago with links to the pearl trade—and enjoy special experiences, including an exclusive tour of a tropical research station and a visit to an island group where ancient artisan traditions thrive.*

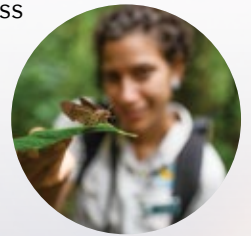
## **Gain Unparalleled Access to an Engineering Marvel**

*National Geographic Quest* has special permission to linger in the Panama Canal Zone, giving our travelers the opportunity to see this landmark at any hour, from the mid-day cargo rush to its enchanting evening illumination.



## **Spend Time at a Renowned Research Station**

Since 1932, biologists from across the globe have traveled to Panama's Barro Colorado Island to study its lush lowland tropical forests. Our guests are exclusively invited to a talk with members of the Smithsonian Tropical Research Institute's roster of resident scientists.



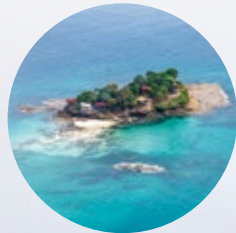
### Encounter Rare Wonders of the Tropical Dry Forest

The Guanacaste region of Costa Rica is home to one of Central America's largest tropical dry forests, a rare ecosystem of delicate scrublands and flowering trees. Spy species like armadillos and white-nosed coatis that are uniquely adapted to the arid conditions.



### Delve into the Pearl Trade

After the Spanish first plucked the archipelago's namesake gemstones from bordering waters in the early 16th century, the Pearl Islands became a harvesting hub. Hear about the history surrounding the pearl trade as we explore the colonial past of these idyllic islands.



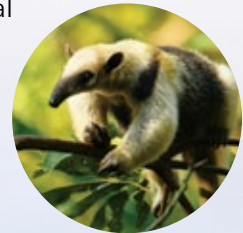
### Enjoy an Immersive Village Visit

Spend a day in Panama's Guna Yala archipelago, where Indigenous Guna women make intricate *mola* handicrafts just as they have for centuries—a tradition incorporated into colorful appliqué clothing that is still worn on the islands today.



### Seek Out Elusive Jungle Wildlife

Venture into the tangled tropical forests of Corcovado National Park, described by *National Geographic* magazine as "the most biologically intense place on Earth," and seek out rare and reclusive creatures, from grazing tapirs to tree-climbing anteaters.



# What to Expect

## Expedition Cruising for Families

*Expedition cruising is a great fit for families—whether you are parents traveling with grade-schoolers or grandparents bringing along the whole family for a graduation celebration. With activities that combine learning and fun, and a team of dynamic experts leading the way, each day is filled with discoveries that awaken new passions no matter your age.*

### **Why are expedition cruises ideal for kids and families?**

They are an exhilarating combination of exploration and education, where each day is full of hands-on learning on board and on shore. The ship is casual and comfortable—a home base where your family can share the thrill of discovery and make lifelong friendships with other families that are enthusiastic about exploring.

### **What age groups would enjoy expedition cruising?**

There is something for everyone, from the second grader fascinated by ship navigation, to the teenager who loves the freedom of kayaking, to the grandparent who never misses a naturalist talk. Your family makes memories together, and yet every generation can enjoy the experience their own way.



## What types of activities can children participate in?

Any of our expert-led excursions, from zip-lining to snorkeling with colorful fish.

## Are there accommodation options for families?

Families often reserve adjacent rooms, and *National Geographic Quest* has adjoining rooms that turn two cabins into a family suite.

## What can kids do on the ship?

Kids tend to love down time on board: they are free to roam and explore their interests, but never far from family. They can examine footage of sea creatures with an undersea specialist or visit the open Bridge to see the captain demonstrate how navigation instruments work. They might read a book in the lounge, or play a board game with new friends. They have just enough independence—and plenty of ways to stay entertained.

## How far ahead of time should you book an expedition cruise for your family?

We recommend booking as far out as possible so you have flexibility to reserve the cabins and dates that suit your family. Booking early also gives you and your family more time to research fun facts about your destination and to prepare for the adventure ahead.

*Left: Two young travelers paddle in sync along the Costa Rican coastline; the rainforest of Costa Rica's Osa Peninsula is a dynamic natural classroom; a blue morpho butterfly finds a safe perch in the hands of a young traveler; a family enjoys downtime in the lounge of National Geographic Quest.*




# Travel with Inspiring Experts

*Traveling with world-class photographers, scientists, and conservationists transforms an ordinary cruise into an extraordinary experience. Through our guest speakers program, you gain access to fascinating experts who offer new layers of insight into the places we explore. These inspiring individuals travel alongside us on select departures, giving compelling lectures and engaging in lively conversations with our guests.*

## Rosa Vásquez Espinoza

**National Geographic Explorer, Biologist, and Conservationist**

 Rosa Vásquez Espinoza is a Peruvian-Andean chemical biologist who grew up learning about traditional medicine from her grandmother in their backyard “natural pharmacy.”




Today, she travels deep into the planet’s pristine jungles in search of tiny species that have the power to make a big difference. Her Ph.D. research, for instance, led to the discovery of new antibiotics and biocatalysts for green chemistry.

Rosa Vásquez Espinoza joins the October 20 & 27, 2024 departures of *Panama and Colombia: Exploring the Caribbean Coast*.

## Dr. Gabby Salazar

**National Geographic Explorer and Conservation Photographer**

 Dr. Gabby Salazar has traveled the world documenting a wide range of subjects, from volcanoes in Guatemala to lion conservation



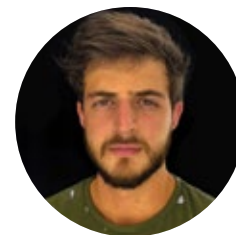
in Zimbabwe. In 2004, Salazar was named the BBC Young Wildlife Photographer of the Year, and in 2021, she was recognized as the Emerging Photographer of the Year by the North American Nature Photography Association.

Dr. Gabby Salazar joins the November 18, 2024 departure of *Exploring Costa Rica’s National Parks and Preserves: Guanacaste, Santa Rosa, and Rincón de la Vieja*.

## Santiago Ramírez Said

**National Geographic Explorer and Botanist**

 Colombian Lebanese botanist Santiago Ramírez Said works on the sustainable development and conservation of Indigenous peoples across the Americas.




He is fluent in four languages and collaborates directly with communities in Panama, Colombia, and beyond to protect their cultural practices, their storytelling traditions, and their historical uses of native plants.

Santiago Ramírez Said joins the February 4, 2025 departure of *Costa Rica and the Panama Canal* and the November 20 & 25, 2025 departures of *Exploring Costa Rica’s National Parks and Preserves: Guanacaste, Santa Rosa, and Rincón de la Vieja*.

## Jennifer Davidson

**National Geographic Photographer**

 Jennifer Davidson specializes in documenting travel and culture and has shot extensively in remote fishing villages along the



Colombian coastline. Her work in South America has been published in *National Geographic Traveller* magazine (UK). A passionate instructor, Jennifer leads photo expeditions across the globe and enjoys teaching others to see the world in new ways through their cameras.

Jennifer Davidson joins the November 9, 2025 departure of *Panama and Colombia: Exploring the Caribbean Coast*.

*“I loved my first—but definitely not my last—voyage with Lindblad Expeditions-National Geographic. For me it was the staff, the fantastic travelers from all over the world, and the knowledge I gained—about the Panama Canal, the fascinating intricacies of the rainforest, and the many birds I had never even heard of before.”*

– Traveler, Costa Rica and the Panama Canal







*Clockwise from top: A guest seeks out the perfect shot of a mangrove forest in Guanacaste, Costa Rica; a pair of white-faced capuchin monkeys give the camera curious looks; travelers take in a Costa Rican sunset; local performers show off the Congo dance of Panama in Portobelo; a pair of scarlet macaws; binoculars reveal a closer look at the canopy in the Barro Colorado Wildlife Refuge; a Zodiac takes travelers to a remote shoreline; a local guide brings guests to his village in Panama's Gun Yala archipelago.*



Keel-billed Toucan.

## Costa Rica & the Panama Canal



**8 DAYS / FROM \$7,173pp**  
**2024 Nov., Dec. / 2025 Jan.-Mar., Nov., Dec.**  
**National Geographic Quest**

Visit [expeditions.com/wild](https://expeditions.com/wild) for itinerary details, extensions, and current rates

### HIGHLIGHTS

- Spend two days **transiting the engineering marvel of the Panama Canal** and observe its complex lock system activity at eye-level.
- **Hike into the lush green of world-renowned Corcovado National Park** to spot endemic wildlife, including tropical birds and monkeys.
- Explore the tiny islands in the Gulf of Panama, and **snorkel, paddleboard, or swim off coral-fringed Isla Coiba**, a UNESCO World Heritage site.
- Go ashore on **Barro Colorado Island—the world's most intensely studied tropical rainforest**—to visit the Smithsonian Tropical Research Institute.
- **Extend your expedition** in Panama City or Costa Rica's Caño Negro Wildlife Refuge.

### SPECIAL OFFERS

- \$500 off children under 18.
- Save 10% when you combine **Costa Rica & the Panama Canal** with **Exploring Costa Rica's National Parks** (pg 21).

### SPECIAL GUEST

Join National Geographic Expert **Santiago Ramirez Said** on Feb. 4, 2025.



# The Panama Canal, Pearl Islands & Darién Jungle: Tropical Wonders & Vibrant Cultures



8 DAYS / FROM \$7,389pp

2025 Dec. / 2026 Jan.

National Geographic Quest

Visit [expeditions.com/panama](https://expeditions.com/panama) for itinerary details and current rates

## HIGHLIGHTS

- Transit the legendary **Panama Canal** over two days to see it by day and dramatically lit up at night—plus enjoy an exclusive stop at the Smithsonian Tropical Research Institute's Barro Colorado Island.
- Discover the storied Spanish architecture and fascinating pirate history of **Portobelo**, a **UNESCO World Heritage site**.
- Explore **Isla Iguana Wildlife Refuge** and spot **sea turtles and black and green iguanas** on the beach or while snorkeling offshore.
- **Meet the Indigenous Emberá people of Darién** and learn about their customs, traditions, and deep reverence for their natural surroundings.
- **Sea kayak, hike, Zodiac cruise, and snorkel in the tranquil Pearl Islands**, a network of 200 islands known for turquoise waters, white-sand beaches, and an enduring connection to the pearl trade.
- **Extend your expedition** in Panama City for immersive historic walking tours.



Smithsonian Tropical Research Institute,  
Barro Colorado Island.

# Panama & Colombia: Exploring the Caribbean Coast



8 DAYS / FROM \$6,612pp  
2024-2025 Oct., Nov.  
**National Geographic Quest**

Visit [expeditions.com/colombia](https://expeditions.com/colombia) for itinerary details, extensions, and current rates

## HIGHLIGHTS

- Spend two days transiting the **engineering marvel of the Panama Canal** and observe its complex lock system activity at eye-level.
- Immerse yourself in Colombia's overwhelming variety of flora and fauna as we explore on **naturalist-led jungle hikes**.
- Explore idyllic islands, **snorkel vibrant coral reefs**, and search for wildlife in healthy mangroves.
- Visit a wide array of remote villages and communities central to the identity of **Colombian art and culture**.
- **Extend your expedition** in Panama City for immersive historic walking tours.



## SPECIAL GUEST

Join National Geographic Expert **Rosa Vasquez Espinosa** on Oct. 20 & 27, 2024 and Naturalist **Jennifer Davidson** on Nov. 9, 2025.

*Old Spanish cannon in Portobelo, Panama.*





Guanacaste Costa Rica.

## Exploring Costa Rica's National Parks and Preserves: Guanacaste, Santa Rosa, and Rincón de la Vieja



6 DAYS / FROM \$4,408pp  
 2024 Nov. / 2025 Jan.-Mar., Nov., Dec.  
**National Geographic Quest**

Visit [expeditions.com/guanacaste](https://expeditions.com/guanacaste) for itinerary details and current rates

### HIGHLIGHTS

- Venture through the **Guanacaste Conservation Area** by kayak, Zodiac, and on foot.
- Glide through a mangrove forest to see **reddish egrets, spoonbills, white ibis, and crocodiles**.
- Discover **remote, quiet bays** along the wild Santa Elena Peninsula.
- Explore **Rincón de la Vieja National Park**—alive with active volcanoes and gurgling mud pots—for howler monkey encounters, waterfall hikes, and an optional zip-lining excursion.
- Celebrate the finale of our Guanacaste adventure with **afternoon refreshments and hors d'oeuvres on the beach**.
- **Extend your expedition** in Panama City or Costa Rica's Caño Negro Wildlife Refuge.



### SPECIAL OFFERS

- \$500 off children under 18.
- Save 10% when you combine **Exploring Costa Rica's National Parks with Costa Rica & the Panama Canal** (pg 18).

### SPECIAL GUESTS

Join National Geographic Photography Expert **Gabby Salazar** on Nov. 18, 2024, and National Geographic Expert **Santiago Ramirez Said** on Nov. 20 & 25, 2025.

# Explore More Optional Extensions

## Panama City & San Lorenzo

PRE- OR POST-VOYAGE | 3 DAYS | FROM \$1,540

Extend your stay in Panama City, a vibrant metropolis poised at the crossroads of the Americas. On our exploration of the city, we take a VIP tour of the Panama Canal Museum; discover the wildly colorful BioMuseo, Frank Gehry's only architectural work in Latin America; visit former U.S. army base Fort Amador; and stroll the enchanting cobblestone streets of the Casco Viejo Old Town, a UNESCO World Heritage site. We also devote a day to discovering the San Lorenzo Protected Area, home to lush tropical forests and the UNESCO-listed Fort San Lorenzo.



Add it to: *Costa Rica and the Panama Canal*; *Panama and Colombia: Exploring the Caribbean Coast*; or *The Panama Canal, Pearl Islands, and Darién Jungle: Tropical Wonders and Vibrant Cultures*.





Clockwise from left: The Celeste River in Tenorio Volcano National Park; a waterfall surrounded by lush jungle; yellow-throated toucan.

## Caño Negro Rainforests and Reserves

PRE- OR POST-VOYAGE | 5 DAYS | FROM \$3,990

Venture to Costa Rica's remote Caño Negro district, home to critical wetland habitats that host some of the best birdwatching on the continent. Enjoy a stylish glamping experience at Tocú Tent Camp, our home base, and set out to explore Tenorio Volcano National Park and its surrounding foothills. Traverse suspension bridges for an incredible bird's-eye view of the region's lush rainforests, and learn about the culture and cuisine of the Maleku people, Costa Rica's smallest remaining Indigenous tribe.

Add it to: *Costa Rica and the Panama Canal* or *Exploring Costa Rica's National Parks and Preserves: Guanacaste, Santa Rosa and Rincón de la Vieja*.



## National Geographic Quest

**CAPACITY:** 100 guests in 50 outside cabins.

**REGISTRY:** United States. **OVERALL LENGTH:** 238 feet.

*National Geographic Quest* was designed with over 50 years of expedition heritage and built in the U.S.A. She sets a new standard in exploration and comfort.

**PUBLIC AREAS:** Global gallery; fitness center; LEXspa; lounge with full service bar and facilities for films and presentations; observation deck; mudroom with lockers for expedition gear, and a partially covered sundeck with chairs and tables. Our "open Bridge" provides guests an opportunity to meet our officers and captain and learn about navigation.

**MEALS:** Served in a single seating with unassigned tables. The menu features locally inspired fare.

**CABINS:** All cabins face outside with windows or portholes, private facilities and climate controls. Category 4 cabins have step-out balconies.

**EXPEDITION EQUIPMENT:** A fleet of 8 Zodiacs and 24 kayaks, paddleboards, remotely operated vehicle (ROV), hydrophone, splash-cam, underwater video camera, video microscope, snorkeling gear and wet suits for all guests (where applicable), and OM System Photo Gear Locker.

**SPECIAL FEATURES:** Guest internet access, elevator, Lindblad Expeditions-National Geographic certified photo instructor, and undersea specialist.

**WELLNESS:** The vessel is staffed by a Wellness Specialist and features a gym with an elliptical machine, treadmill, exercycles, handweights and resistance bands. Treatments in the LEXspa are available by appointment.



*From top: Enjoy expansive views and regional fare in the informal dining room; gather to watch for wildlife or enjoy an evening cocktail with friends in the open air, partially covered sun deck.*





Clockwise above: the lounge, with 270° views, is the hub of the expedition community; Category 5 cabin is our most spacious; Category 4 cabin with single beds (which can be converted to queen) and private step-out balcony.

**CATEGORY 1:** Main Deck #301-306 Cabins face outside with two portholes, feature two single beds that can convert to a queen, a writing desk, two nightstands, full length mirror and a closet.

**CATEGORY 2:** Main Deck #307-315 Cabins face outside with two portholes, feature two single beds that can convert to a queen, a writing desk, two nightstands, full length mirror and a closet.

**CATEGORY 3:** Upper Deck #201-206 Cabins face outside with a large window, feature two single beds that can convert to a queen, a writing desk, two nightstands, full length mirror and a closet.

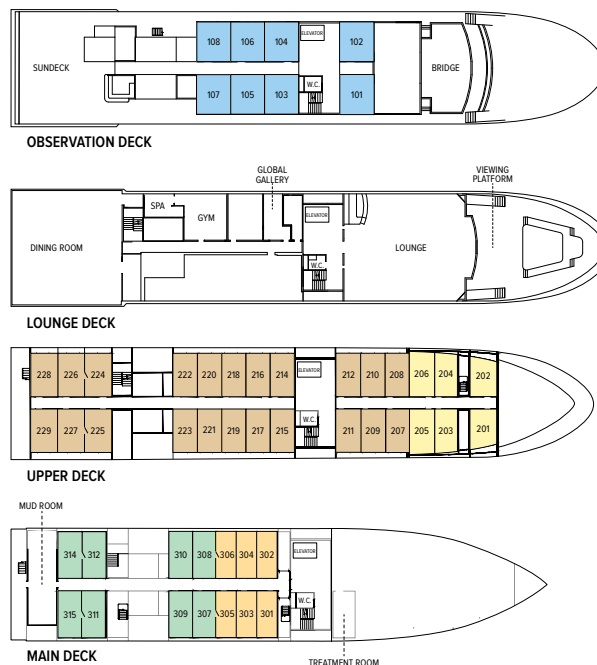
**CATEGORY 4:** Upper Deck #207-229 Cabins face outside with a sliding glass door and small private balcony, feature two single beds that can convert to a queen, a writing desk, two nightstands, full length mirror and a closet.

**CATEGORY 5 (SUITE):** Observation Deck #101-108 Cabins face outside with a large view window, feature two single beds that can convert to a queen, a writing desk, two nightstands, full length mirror, convertible sofa bed to accommodate a third person, expanded bathroom and extra closet space.

**NOTE:** Solo Occupancy cabins are available in Categories 1 and 2 only. Third person rates are available in Category 5 cabins at one half the double occupancy rate.

**Connecting Cabins via internal doorway access:**

Main Deck: #312-314, #311-315, #306-308, #305-307;  
Upper Deck: #224-226, #225-227



**SEE MORE ONLINE:** Learn more about *National Geographic Venture* at [expeditions.com/venture](http://expeditions.com/venture)

## Special Offers

Offers are valid for new bookings only, subject to availability, and may not be combined with other offers. Call for details.

### BRING THE KIDS

We believe sharing an expedition with children is a life-enhancing experience. Take \$500 off for each child under the age of 18 on any departure. Not applicable on extensions or airfare.

### 10% OFF BACK-TO-BACK VOYAGES

Save 10% on consecutive back-to-back departures. Applicable on voyage fares only and not valid on extensions or airfare.

### SAVE 5% TRAVELING AS A GROUP

Save 5% when traveling as a group of eight or more adults over age 18. Valid on voyage fares only and not applicable on extensions or airfare. Deposit, final payments, and cancellation policies for group travel vary from our regular policies.

### COMBINING OFFERS

Certain offers may be combinable for up to two savings opportunities except where noted otherwise. For example, travel with a group of eight or more on back-to-back voyages and take advantage of both savings.



**Photo Credits:** Willy Alfaro, Alamy, José Calvo, Alexandra C. Daley-Clark, Jennifer Davidson, Ralph Lee Hopkins, Sven-Olof Lindblad, Jeff Mauritzen, Michael S. Nolan, Marco Ricca, Douglas Scaletta, Max Seigal, Shutterstock, David Vargas.

## Inclusive Pricing

We design our suite of inclusions to foster a complete expedition experience, providing everything you need to explore your destination to the fullest and eliminating the unnecessary.

- All meals as indicated in the itinerary
- Snacks and non-alcoholic beverages, including 24-hour coffee, tea, and soda on demand
- Beer, wine, cocktails, and spirits. Super premium wines and liquors are available for purchase
- Hors d'oeuvres and snacks during lounge recap
- All excursions
- Exploration tools curated to your destination, such as Zodiacs, stand-up paddleboards, kayaks, and a full complement of snorkeling equipment
- Lectures and presentations
- The guidance and expertise of our expedition staff
- Accommodations on land as indicated in itinerary
- Special access permits, park fees, and port taxes
- The services of a physician, physician's assistant, nurse practitioner, or paramedic (where available)
- Transfers to and from designated flights
- Fitness center
- Morning stretch classes and 24-hour access to exercise equipment
- Fully stocked library
- Refillable water bottle

### NEW! COMPLIMENTARY WI-FI

We are pleased to offer wireless internet across our expedition fleet through Speedcast and Starlink, the world's first and largest satellite constellation. Enjoy a complimentary basic Wi-Fi plan aboard *National Geographic Quest*, which accommodates email, messaging, and social media apps. Enhanced internet plans are available for purchase on board.

# Reservation Information

**Terms & Conditions:** For complete terms and conditions please visit [expeditions.com/terms](https://expeditions.com/terms)

**Pricing:** For best pricing book early. Prices quoted in this brochure are per person based on double occupancy in USD, and based on select departures. Prices quoted are valid at the time of printing, March 28, 2024, are subject to change and availability at time of booking, and are not guaranteed until required deposit is made. Visit [expeditions.com](https://expeditions.com) or call for all pricing.

**Pricing Includes:** All accommodations aboard ship or in hotels per itinerary; all meals as indicated in the itinerary; beer, wine, cocktails, and spirits (except super-premium brands available for purchase) aboard; hors d'oeuvres, excursions and airport transfers to and from recommended flights, as indicated in the itinerary; exploration tools such as kayaks; guidance and company of our leading expedition staff; presentations by expedition staff and expert guest speakers; complimentary reusable water bottle; crew gratuities; services of a medical professional; 24-hour access to exercise equipment; 24-hour access to lounges, observation decks, library, and other shared spaces; park and site entrance fees, special access permits, and port taxes. Unused services or items included in our programs are non-refundable.

**Not Included:** Air transportation (except flights when indicated as included); pre- and post-expedition extensions; additional hotel nights (except when indicated as included); private transfers; laundry, spa treatments, Wi-Fi, and phone services (except when indicated as included); travel protection plans; and passport, visa, and immigration fees.

**Itinerary Modifications:** Itinerary routing may vary and stops may be subject to modification and/or permitting. Visit website itinerary pages for details and exceptions.

**Airfare:** For all programs, airfare is an additional cost unless otherwise

indicated. We will gladly assist in making your air arrangements for a \$50 per person service fee.

**Reservations, Deposits, and Final Payments:** To reserve your place, an advance payment deposit is required at the time of reservation. Receipt of advance payment deposit indicates your acceptance of the terms and conditions. Final payment schedule can be found online. Visit [expeditions.com/terms](https://expeditions.com/terms) for complete details about deposits and final payment schedules which may vary by ship.

**Travel Protection Plan:** We strongly recommend that you take advantage of our Travel Protection Plan. This plan offers comprehensive coverage to protect you from cancellation fees, costs incurred due to trip delays/interruption, medical assistance, and damaged or lost baggage, and provides medical assistance and evacuation during your travels. Our Travel Protection Plan is available for U.S. residents only and may be purchased any time prior to final payment due date. If you are not satisfied for any reason, you may return your plan within 10 days after purchase. Your premium will be refunded if canceled within 10 days, provided you have not already departed on the trip or filed a claim. When so returned, the coverage under the plan is void from the original date of purchase.

**Responsibility and Other Terms & Conditions:** Certain provisions concerning, among other things, limitations of Lindblad Expeditions' and National Geographic Expeditions' (a division of National Geographic Partners, LLC) liability for loss of property, injury, illness, or death during the voyage will be provided to all guests on the ship's ticket sent prior to departure, and are also available on our website at [expeditions.com/terms](https://expeditions.com/terms), or upon request. By registering for a trip, the guest agrees to all such terms and conditions.

**Cancellation Policy:** Call for details or visit [expeditions.com/cancellation-policy](https://expeditions.com/cancellation-policy).

Lindblad Expeditions, LLC is a registered member of the CA Seller of Travel Program #2151120. Registration as a seller of travel does not constitute approval by the State of California. WA Seller of Travel Program #601134845 001 0001.

©2024 Lindblad Expeditions  
Lindblad Expeditions and the Eye are the trademarks of Lindblad Expeditions. All rights reserved.

©2024 National Geographic Partners, LLC. All Rights Reserved.  
NATIONAL GEOGRAPHIC and the Yellow Border are trademarks of National Geographic Society and used with permission.

## Log on to [expeditions.com](https://expeditions.com)

Find everything you need to dream, research, or plan travel to 60+ destinations worldwide.

- ▶ Subscribe to our far-ranging email newsletter
- ▶ See [expeditions.com/stories](https://expeditions.com/stories) for articles, videos & Daily Expedition Reports
- ▶ Follow us on social media for great posts @lindbladexp on Instagram, Pinterest, and @lindbladexpeditions on Facebook
- ▶ Subscribe to our videos on [youtube.com/lindbladexpeditions](https://youtube.com/lindbladexpeditions)



**For Reservations:**  
**Contact your travel advisor or Lindblad Expeditions**  
**1.877.689.1962 or 212.261.9000**

**Reservation Hours:**  
**Monday - Friday 9am - 8pm ET**  
**Saturday & Sunday 10am - 5pm ET**

**Lindblad Expeditions, Inc.,**  
**96 Morton Street, New York, NY 10014**

**For additional information and online reservations, visit us on the Web:**  
**[www.expeditions.com](https://www.expeditions.com)**



LINDBLAD EXPEDITIONS  
96 MORTON STREET, NEW YORK, NY 10014

PRSRT STD  
U.S. POSTAGE  
PAID  
LINDBLAD  
EXPEDITIONS

Account Number:



1.877.689.1962 | WWW.EXPEDITIONS.COM

Printed on 10% recycled content paper with soy-based inks. We recommend that you pass this along for others to enjoy or recycle. 100% carbon neutral. Committed to being single-use plastic free. We care deeply about the planet, and travel as a powerful force for good. Learn more at [expeditions.com/sustainability](https://expeditions.com/sustainability)

CAM-0424

NEW VOYAGE!

## The Panama Canal, Pearl Islands & Darién Jungle: Tropical Wonders & Vibrant Cultures

Embark on our only Central American expedition that travels solely through Panama, connecting you more deeply with the region's wildlife, culture, and famed modern engineering marvel.



Scan QR code for details or visit [expeditions.com/panama](https://expeditions.com/panama)

